

PCL
PROTEIN
CHEMISTRY LAB



pcl.tamu.edu

FOR MORE INFORMATION

Gayan Ivantha Nawaratna
(979) 314 8315
pcl@ag.tamu.edu
Biochemistry & Biophysics Bldg.
Rooms 440 & 442
Texas A&M University
College Station, TX 77843-2128

WALK UP INSTRUMENTS: free training
SERVICES: two week turnaround time
FEES STRUCTURE: pcl.tamu.edu/fee/



WALK UP
INSTRUMENTS

BIOMOLECULAR IMAGING

Typhoon FLA 9500
high resolution, gel, blot and phosphor
screens imager

MASS SPECTROMETRY

Bruker Ultraflex extreme
high resolution, accurate mass
spectrometer

CD SPECTROSCOPY

Jasco J-1500 Circular Dichroism
Spectrophotometer
highly sensitive multi-mode scanner for gels,
blots, 2D DIGE and phosphor

SPECTROFLUORIMETRY

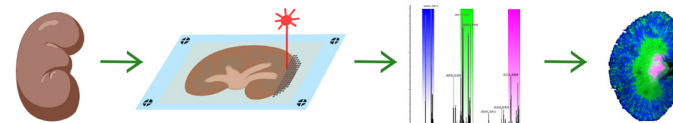
ISS Chronos
modular spectrometer for steady-state
and time-domain fluorescence
measurements

HPLC ANALYSIS

DIONEX Ultimate 3000
UV and Charged Aerosol Detector (CAD)

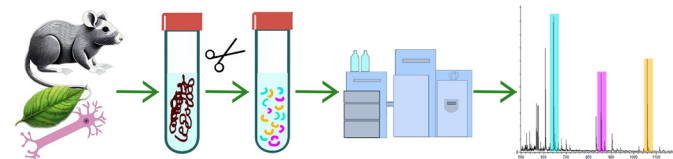
SERVICES

MASS SPEC-IMAGING



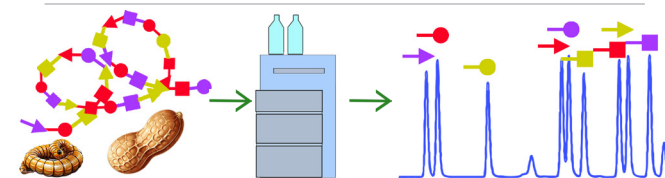
Bruker Ultraflex extreme MALDI-TOF-TOF
Establish molecular maps of spatial
distribution of metabolites, peptides, proteins
and lipids within animal or plant tissues.

MASS SPEC-PROTEOMICS



Thermo Exploris 240 Mass spectrometer
Characterize proteins in complex biological
samples, enabling insights into protein
abundance, protein modifications, and
protein-sequence.

AMINO ACID ANALYSIS



Agilent Technology 1260 Infinity
Determine the composition and absolute
concentration of amino acids in protein or
peptide sample.